



Tamworth Mental Health Unit

Schematic Design Report Landscape Architecture

TaylorBrammer

Contents

1. Introduction	03
2. Site analysis	04
3. Schematic Design	06
4. Early Works	29

Amendment register

DOCUMENT TITLE	REVISION	DATE	STATUS	REVIEWED	CHECKED	VALIDATED
SCHEMATIC DESIGN REPORT	P1	04.08.2021	PRELIMINARY	DMT	AL	DMT
SCHEMATIC DESIGN REPORT	A	31.08.2021	FINAL	DMT	AL	DMT
SCHEMATIC DESIGN REPORT	B	21.12.2022	FINAL	DMT	JH	DMT
SCHEMATIC DESIGN REPORT	C	19.01.2023	FINAL	DMT	JH	DMT

Prepared by

Taylor Brammer Landscape Architects Pty Ltd

Sydney Studio
218 Oxford Street
Woollahra NSW 2025
Australia
tel: 61 2 9387 8855
Sydney@taylorbrammer.com.au

South Coast Studio
26 Moore Street Austinmer
PO Box 3064 Austinmer NSW 2515
Australia
: 61 2 4267 5088
southcoast@taylorbrammer.com.au



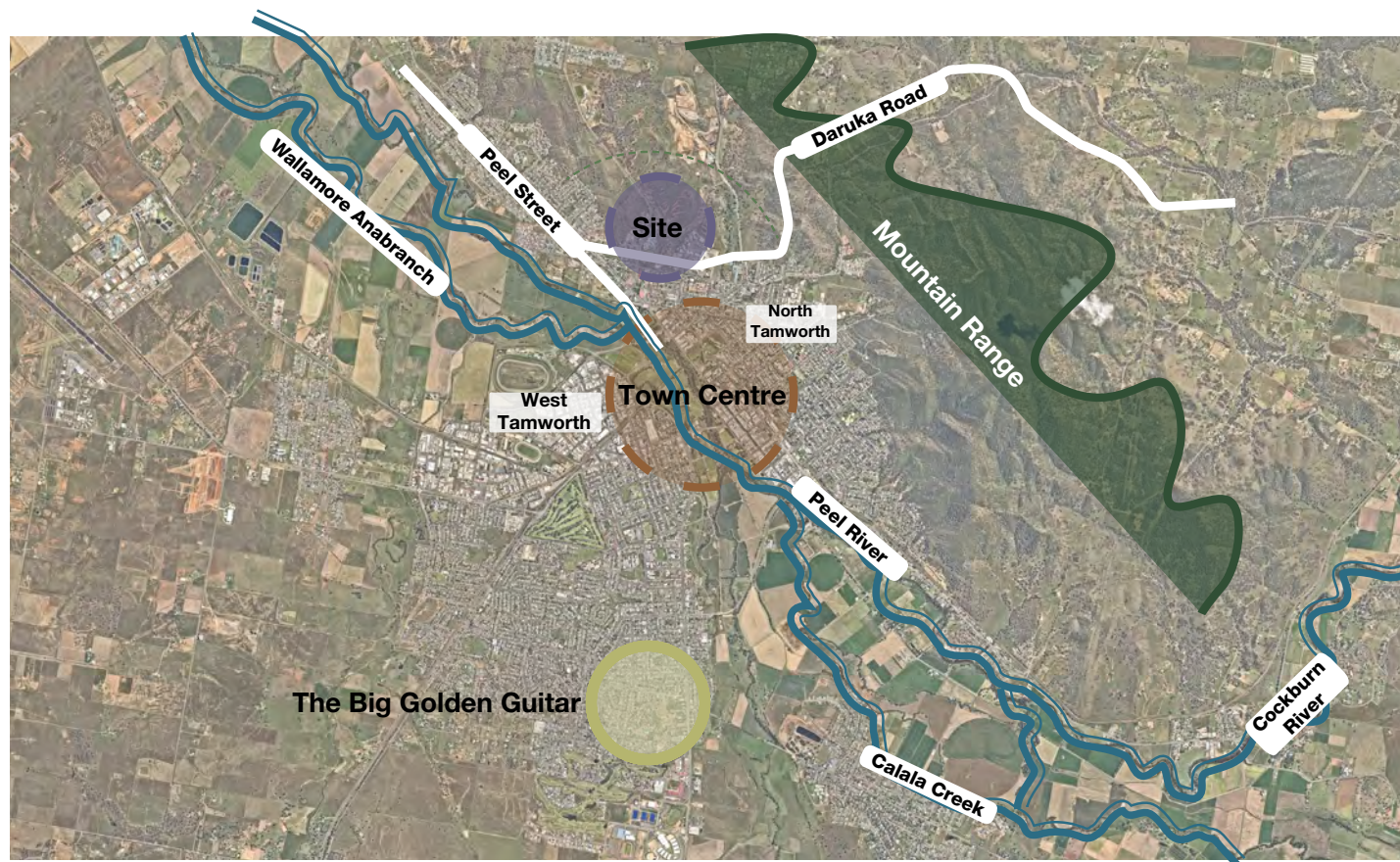
Image of regional Tamworth showing mountain range and landscape character - Source AWOL Dated 13.09.2018

Project Vision, Context and Background

The scope of this report relates to the landscape architectural design approach associated with the construction of the Tamworth Mental Health Unit within the existing Tamworth Hospital precinct. This development involves a range of new landscape opportunities to provide unique living and break out spaces to its residents, whilst grounding the new development in the endemic landscape character of Tamworth.

Project Location

Tamworth Hospital is located within the Tamworth Local Government Area. The site adjoins residential dwellings directly to the south, a rural landscape setting to the north, east, and west with mountain views from the site. The existing mental health unit is located within the northern section of the hospital and as such can be accessed via the Dean Street through road.



Project Context - Sourced from Nearmap Dated 02.08.2021



Tamworth Mountain Views



Peel River



The Big Golden Guitar



Tamworth Cultural Identity

Character photos



View of Site from Dean Street. Existing Buildings to be demolished & trees to be removed



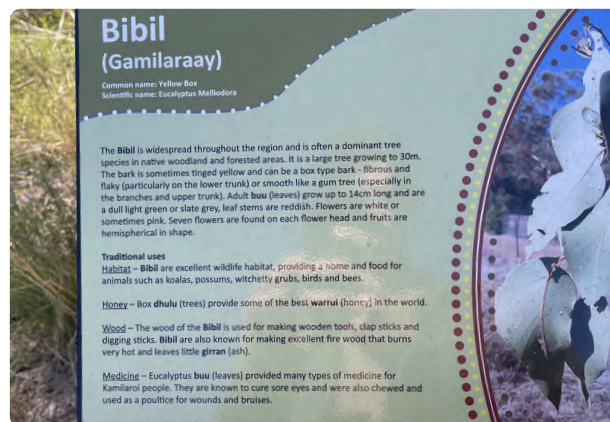
Landscape character of Bicentennial Park at the centre of Tamworth demonstrating a formal cultural planting



Tamworth Regional Botanic Garden demonstrating a mix of both native and cultural planting



Planting to the Indigenous Botanic garden demonstrating the cultural significance of native species to the local Aboriginal community



The Peel River is part of the Namoi catchment, meandering through Tamworth and connecting to Cockburn River further South-East

Local Context and Setting

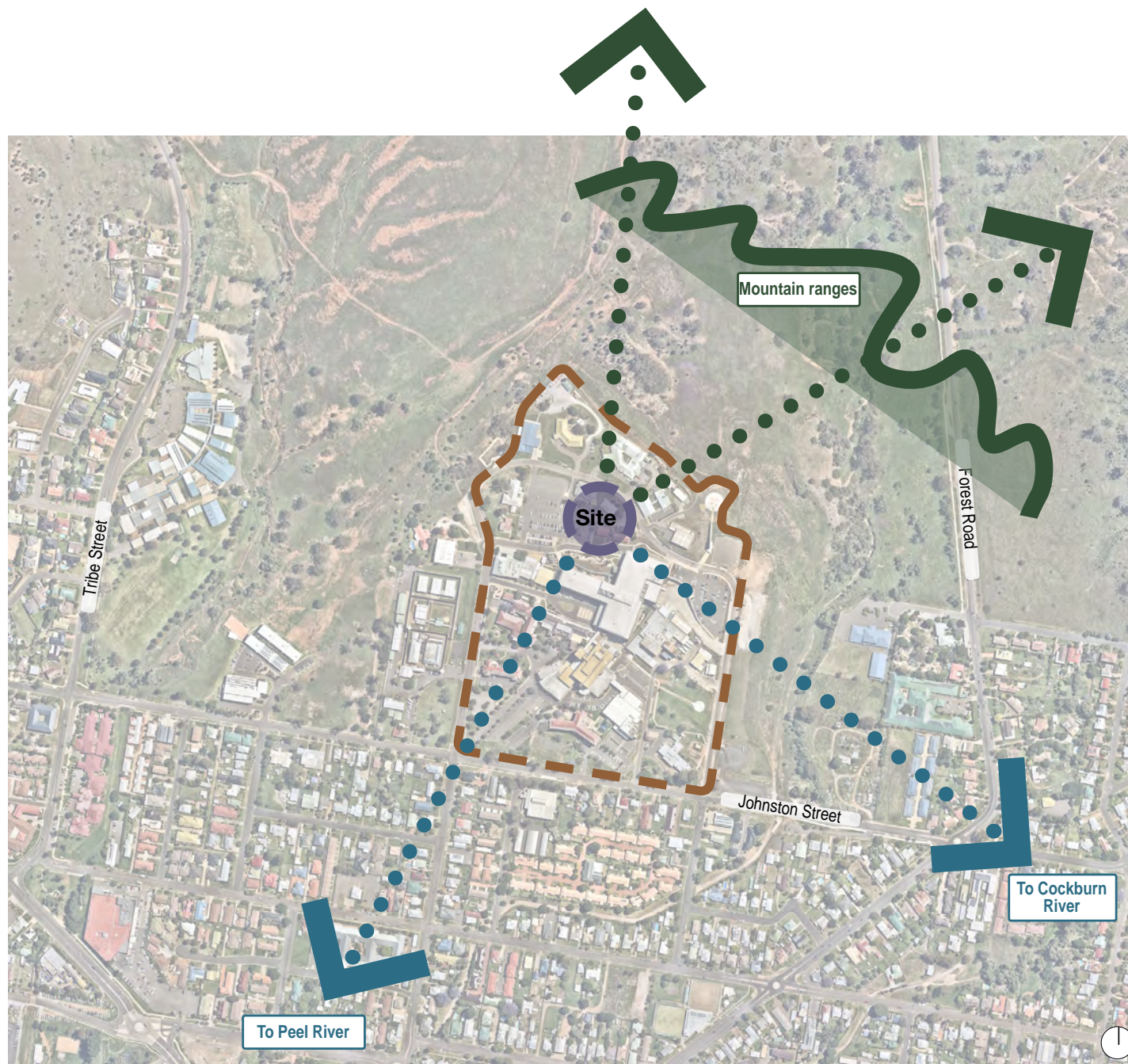
Surrounded by other buildings under the management of the Hospital, Tamworth Mental Health Unit is isolated from the surrounding residential and rural setting. The site is immediately adjacent to the main hospital building which will be connected via an elevated link to Tamworth Mental Health Unit. The Ronald McDonald house is directly to the East of site, with Inala house and the current Banksia building directly to the north.

Vegetation

The existing vegetation directly adjacent Tamworth Mental Health Unit is sparse and mainly in the form of trees, with the broader hospital precinct vegetated with a mix of native and cultural planting. The rural nature of the site is strengthened by planting in key areas to maintain distant sight lines to the surrounding context.

Legend

- Hospital boundary
- Tamworth Mental Health Unit
- Mountain views
- Towards the rivers



Schematic Design Principles

The landscape approach to Tamworth Mental Health Unit draws and builds upon distinctive landmarks and characteristics of the region. These are:

- 1 The Mountains & Bush
- 2 The Meeting Place of Rivers (Peel River & Cockburn River)

The integration of native rhythms, textures, and vegetation of the of these elements are used to create unique and meaningful landscaped spaces.

A quality, valuable, and appropriate outcome will be facilitated through the implementation of the following design principles;

- Integrate the project with local cultural values that aid in creating a positive healing environment.
- Maximise the amenity to the landscape spaces for the residents
- Provide flexible active and passive opportunities for residents
- Engage with local indigenous cultural themes to provide holistic landscape environment
- Provide value-for-money design solutions that achieve high quality low maintenance architectural and urban design outcomes that have longevity

With minimal existing planting around the proposed development, the planting character to the site boundaries is to be predominantly native, with feature deciduous planting in key areas to facilitate solar infiltration during winter months, and provide visual interest.

Tamworth Mental Health Unit provides ten distinctive Landscape courtyards with a range of active and passive engagement opportunities to both residents and staff.

Mountains & Bush



1



River



2



Design Precedents



Wellness & Healing



Warmth of Nature



Memorable spaces



Design Approach

The design is focused on creating a contemporary healing and public domain outcome that directly responds to the natural typologies and landscape character of Tamworth.

The meeting place of the rivers is a strong theme for the entry garden driving a sinuous and place-driven outcome. This is realised through the use of naturally occurring materials, planting, and a design that captures and stores rainwater to re-create a calm and cool riverside experience.

The mountain ranges surrounding the site are drawn on as placemaking themes for the courtyards which face externally. These create a strong connection to the land and the place of Tamworth.

Legend



Landscape Areas

Legend

- ① Entry Plaza
- ② Atrium
- ③ Acute Courtyard
- ④ Older Persons Courtyard
- ⑤ Family Lounge Courtyard
- ⑥ Adolescent Courtyard
- ⑦ High Acuity Zone
- ⑧ Seclusion Courtyard
- ⑨ Staff Courtyard
- ⑩ Dean Street Perimeter Planting

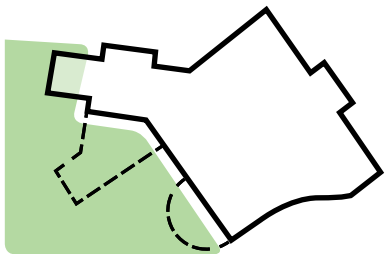
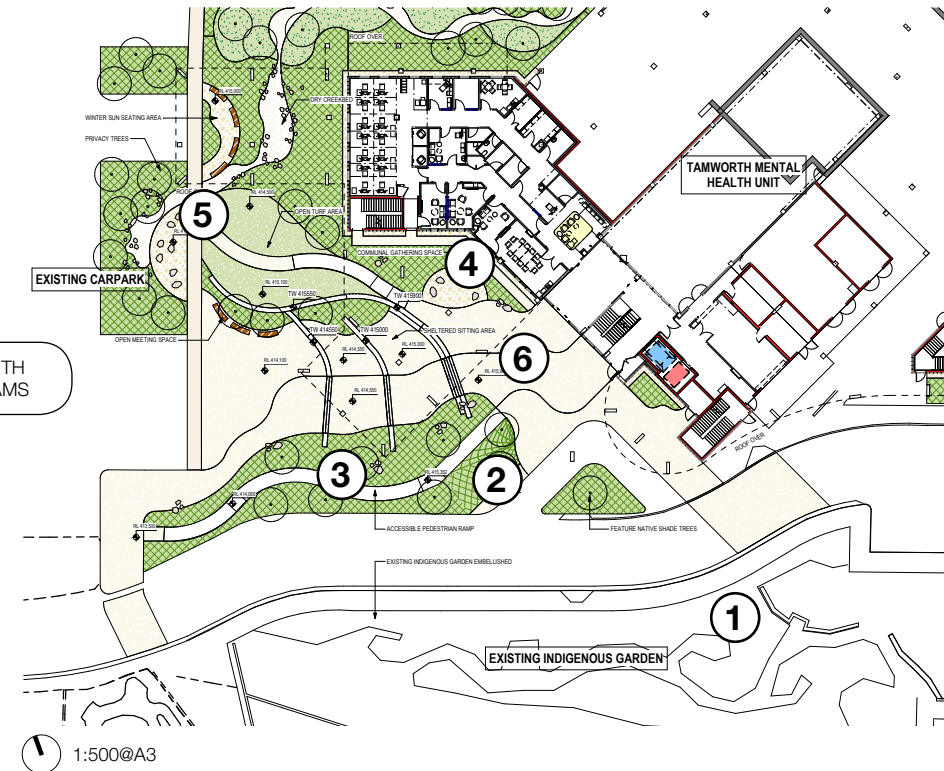


Entry Green

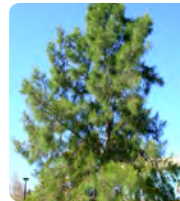
New Entry Green with focal feature landscape planting and paving

- ① Existing Indigenous garden embellished and extended
- ② Feature native shade trees
- ③ Accessible pedestrian ramp with stairs
- ④ Open seating adjacent to dry creek bed
- ⑤ Community gathering space
- ⑥ Raised pedestrian threshold

NOTE: TO BE FURTHER DEVELOPED WITH CONNECTION TO COUNTRY DESIGN JAMS



KEY PLAN



Culturally significant planting



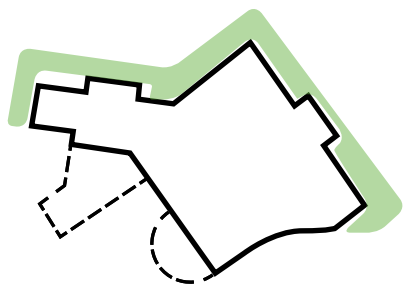
Paving treatment with integration of natural elements



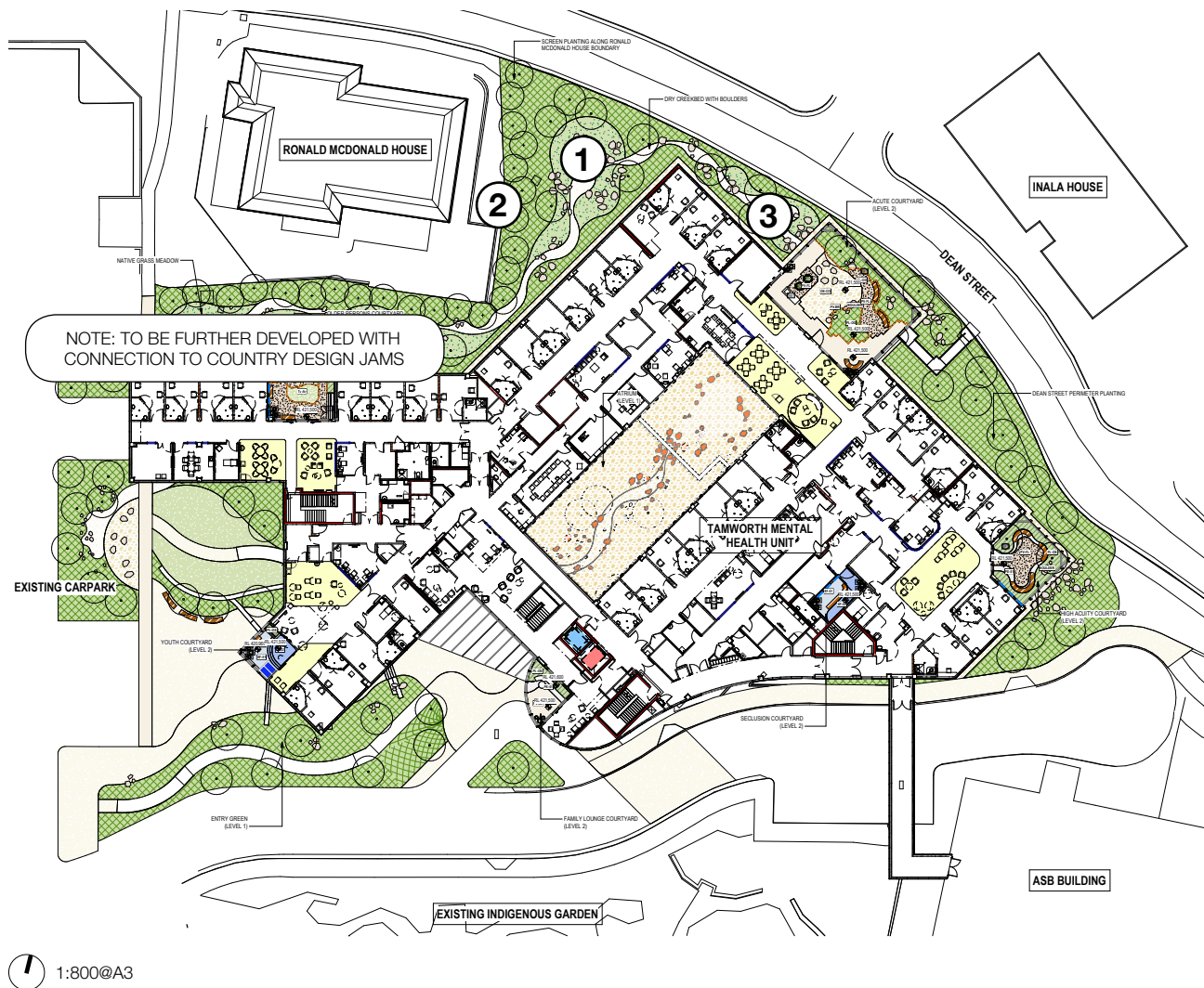
Dean Street Perimeter Planting

Opportunity to establish native vegetative character to the perimeter of the new building as well as spaces to look onto that create a sense of journey and transition in the landscape.

- 1 Meadow planting adjacent dry creek bed
- 2 Buffer planting adjacent Ronald McDonald House
- 3 Shade tolerant planting with local creek character



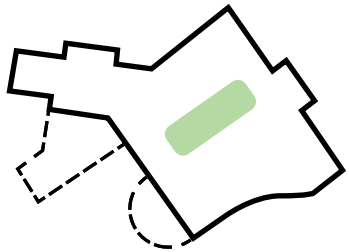
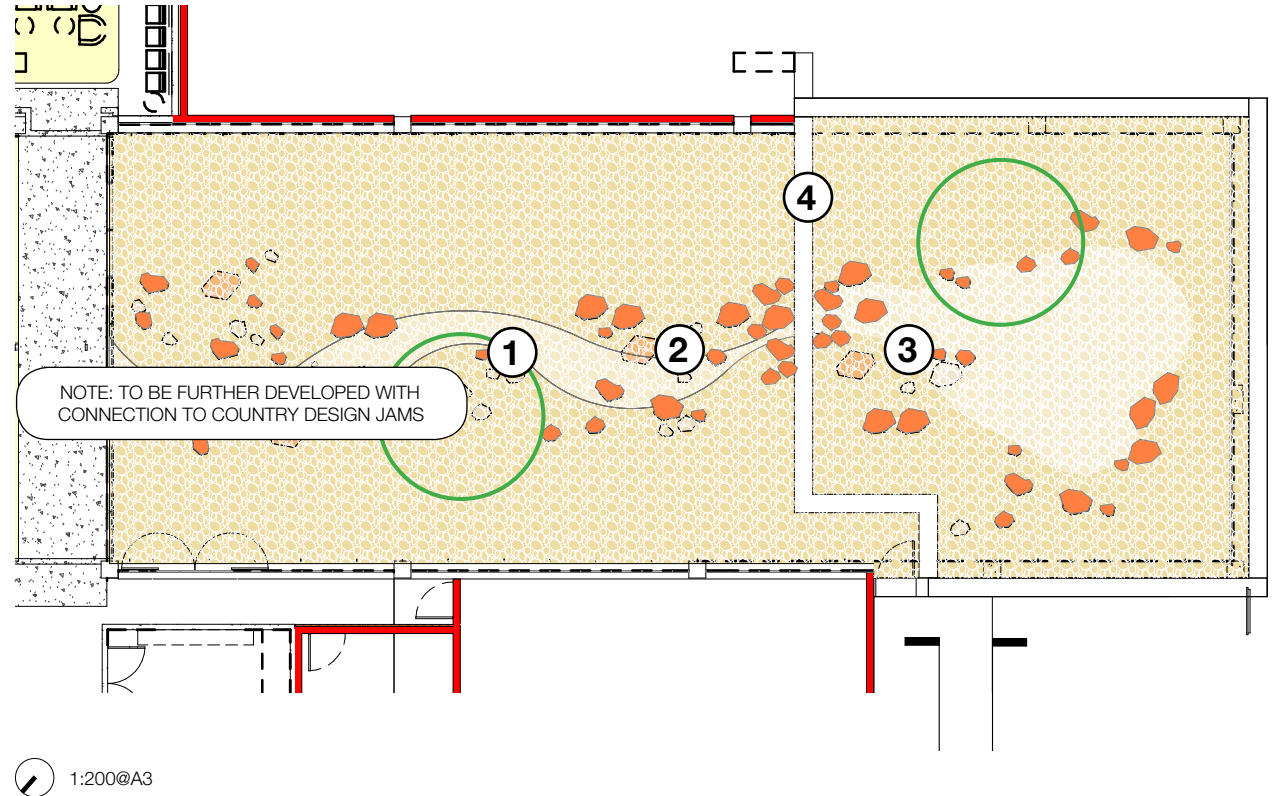
KEY PLAN



Atrium - The Valley

The Atrium located at the centre of Tamworth Mental Health Unit provides a unique and visually stimulating lookout space to the surrounding rooms, with mature trees providing filtered light through to the landscape elements below.

- ① Feature mature tree and understory planting
- ② Dry creek bed with sandstone boulders from the site
- ③ Vibrant sculptures to provide visual interest
- ④ New gabion wall



KEY PLAN



Feature trees to provide filtered light and understory planting



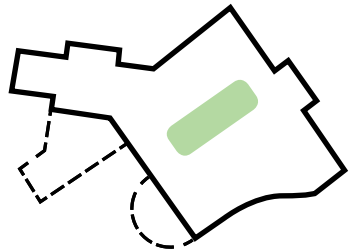
Dry creekbed to atrium floor



Local river pebble

Atrium - The Valley

The Atrium located at the centre of Tamworth Mental Health Unit provides a unique and visually stimulating lookout space to the surrounding rooms, with mature trees providing filtered light through to the landscape elements below.



KEY PLAN

NOTE: TO BE FURTHER DEVELOPED WITH CONNECTION TO COUNTRY DESIGN JAMS

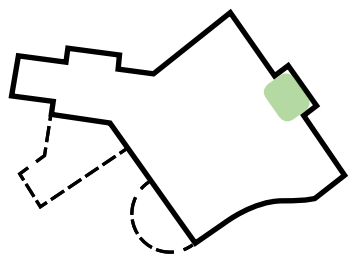
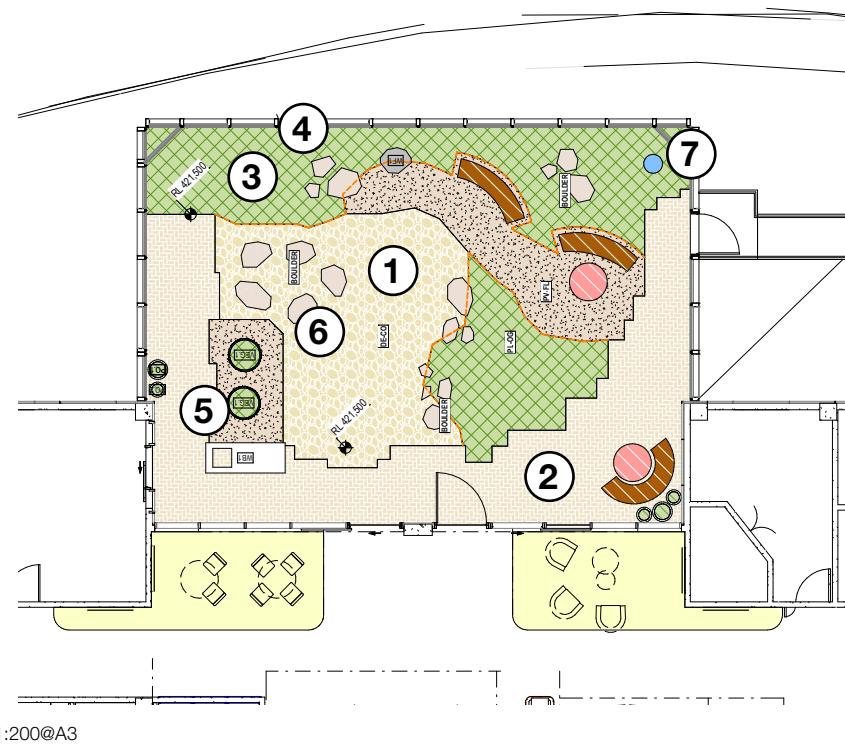


NOTE: COURTYARD DESIGN AND PRINCIPLES TO BE ADAPTED TO REVISED LOCATION AND LAYOUT

Acute Courtyard - Mountains and Bush

The Acute courtyard is the largest resident accessible courtyard within Tamworth Mental Health Unit and provides residents a mix of active and passive opportunities for exercise, healing and restoration.

- 1 Flexible area on decomposed granite
- 2 Walking track to perimeter of courtyard
- 3 New garden with species to be selected pending further consultation with local community
- 4 Mountain and bush inspired mural to Screen
- 5 Raised veggie gardens and work bench
- 6 Informal gathering area with sandstone seating
- 7 Bubbling water feature to provide sensory stimuli



KEY PLAN



Culturally significant planting by residents



Vegetable planter



Rock water feature

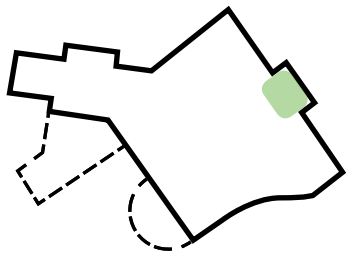


Informal gathering area

NOTE: COURTYARD DESIGN AND PRINCIPLES TO BE ADAPTED TO REVISED LOCATION AND LAYOUT

Acute Courtyard - Mountains and Bush

The Acute courtyard is the largest resident accessible courtyard within Tamworth Mental Health Unit and provides residents a mix of active and passive opportunities for exercise, healing and restoration.



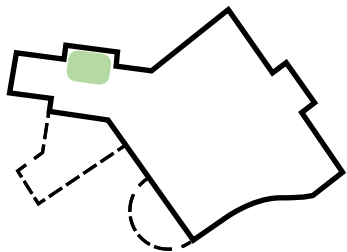
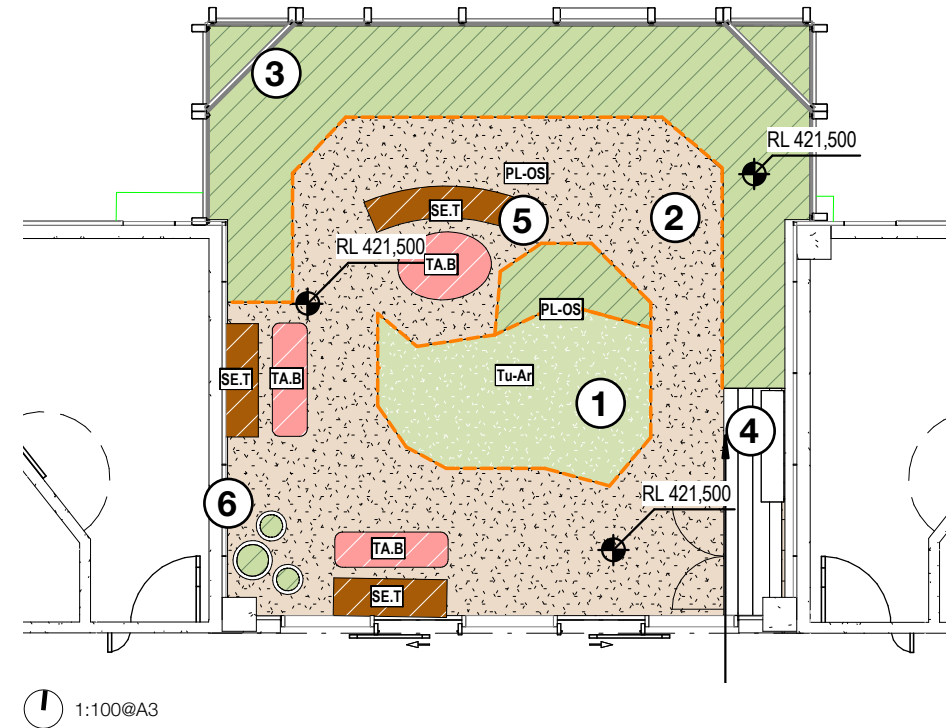
KEY PLAN

NOTE: COURTYARD DESIGN AND PRINCIPLES TO BE ADAPTED TO REVISED LOCATION AND LAYOUT

Older Persons Courtyard- Mountains and Bush

The Older Persons courtyard offers both active and passive opportunities for residents in a calming and restorative environment.

- 1 Flexible turf open space
- 2 Walking track to perimeter of courtyard
- 3 New garden with species to be selected pending further consultation with local community
- 4 Work bench
- 5 Seating opportunities
- 6 Memory wall Integrated into bush inspired mural



KEY PLAN



Memory wall to be populated by residents



Bush inspired mural



BBQ for resident use



Motion activated sounds of nature

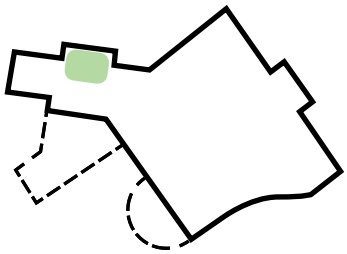


Culturally significant planting and educational indigenous interpretations

NOTE: COURTYARD DESIGN AND PRINCIPLES TO BE ADAPTED TO REVISED LOCATION AND LAYOUT

Older Persons Courtyard- Mountains and Bush

The Older Persons courtyard offers both active and passive opportunities for residents in a calming and restorative environment.



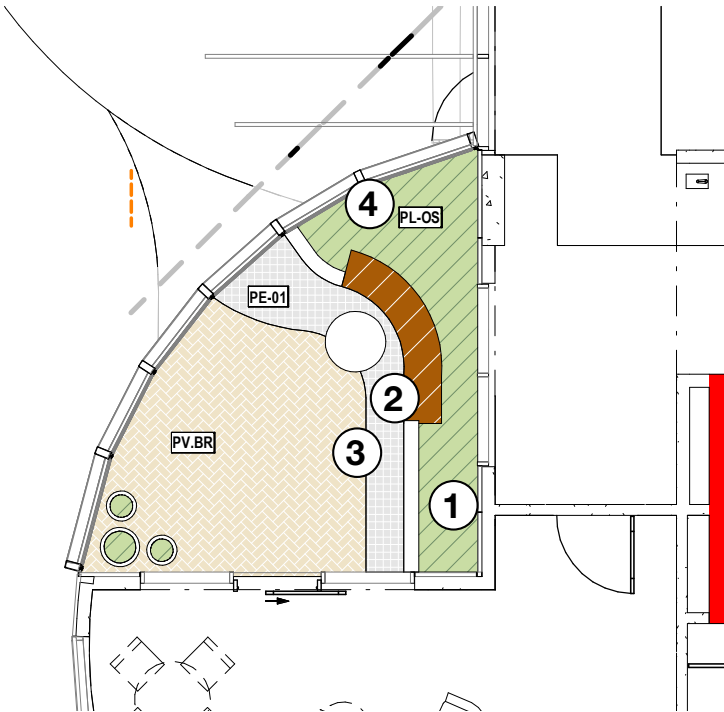
KEY PLAN

NOTE: COURTYARD DESIGN AND PRINCIPLES TO BE ADAPTED TO REVISED LOCATION AND LAYOUT

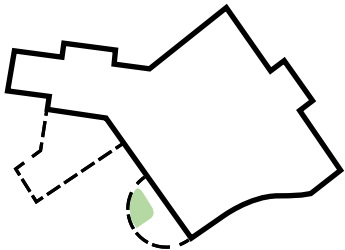
Family Lounge Courtyard - The River

The Family lounge courtyard is an extension of the internal lounge providing access to landscape for visiting family members residents

- 1 Planting bed with species to be selected pending further consultation with local community
- 2 Raised timber seating with artwork to table
- 3 River inspired paving
- 4 Green wall with creeper mesh



1:100@A3



KEY PLAN



Artwork to table



Sensory planting



Stainless steel creeper mesh

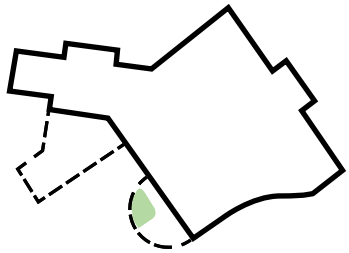


Organic timber seating

NOTE: COURTYARD DESIGN AND PRINCIPLES TO BE ADAPTED TO REVISED LOCATION AND LAYOUT

Family Lounge Courtyard - The River

The Family lounge courtyard is an extension of the internal lounge providing access to landscape for visiting family members residents



KEY PLAN

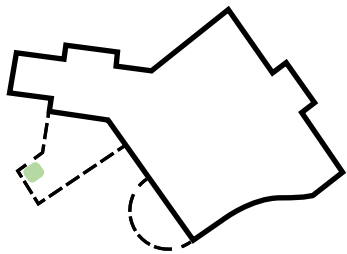


NOTE: COURTYARD DESIGN AND PRINCIPLES TO BE ADAPTED TO REVISED LOCATION AND LAYOUT

Adolescent Courtyard - The River

The Adolescent courtyard provides an opportunity for active engagement through the provision of exercise equipment as a physical outlet for the residents.

- ① Table tennis
- ② Moveable/temporary bean bags
- ③ River inspired softfall tiles
- ④ Modular seating element



KEY PLAN

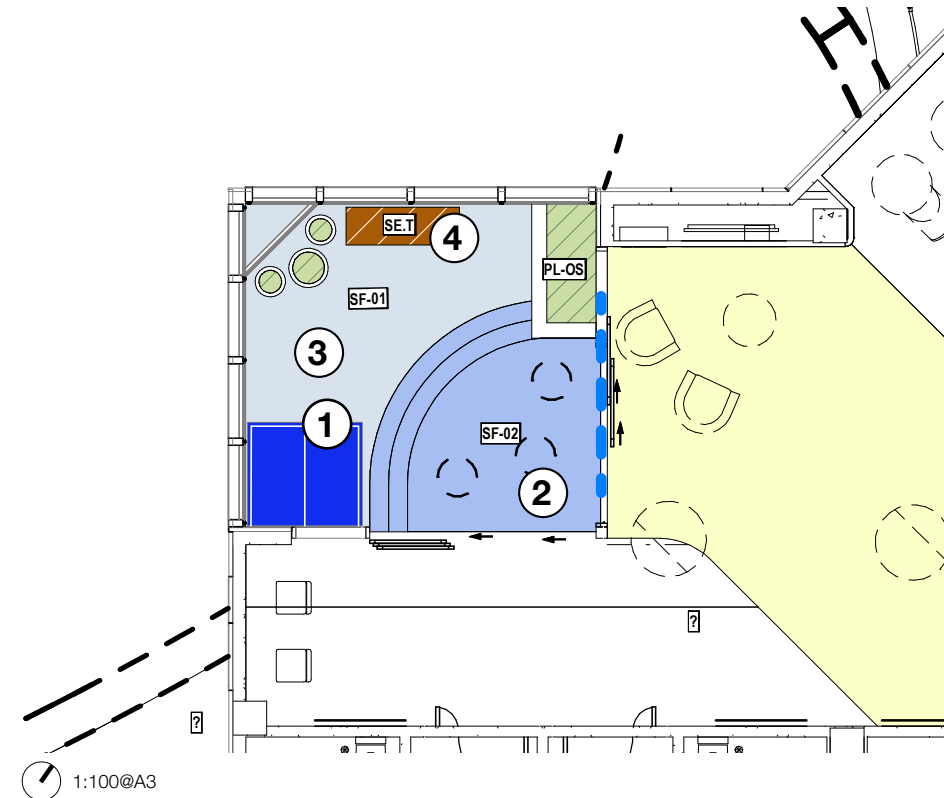


Table tennis

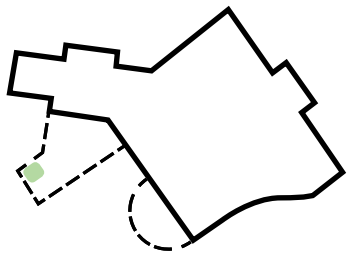


Moveable bean bags

NOTE: COURTYARD DESIGN AND PRINCIPLES TO BE ADAPTED TO REVISED LOCATION AND LAYOUT

Adolescent Courtyard - The River

The Adolescent courtyard provides an opportunity for active engagement through the provision of exercise equipment as a physical outlet for the residents.



KEY PLAN

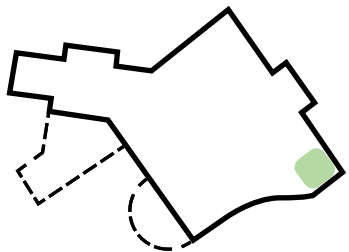


NOTE: COURTYARD DESIGN AND PRINCIPLES TO BE ADAPTED TO REVISED LOCATION AND LAYOUT

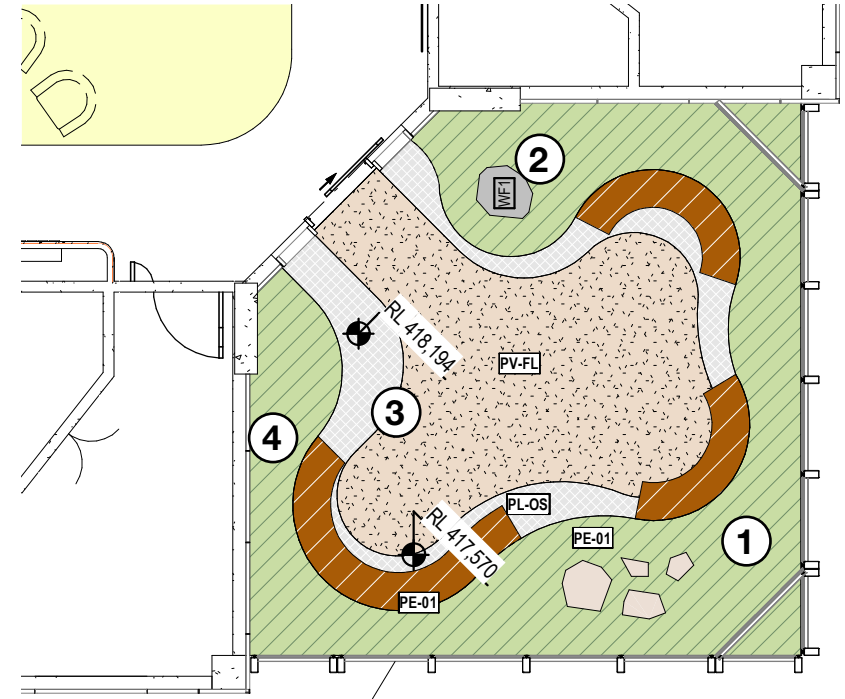
High Acuity Zone - The River

The High Acuity courtyard overlooks the atrium provides a passive space for group meetings with a gathering area, sensory planting, and auditory stimuli.

- 1 Planting bed with species to be selected pending further consultation with local community
- 2 Cascading rock water feature amongst sensory planting area
- 3 River inspired cobble paving
- 4 River inspired mural



KEY PLAN



1:100@A3



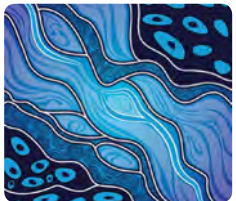
Timber seating



Rock water feature



Sensory planting

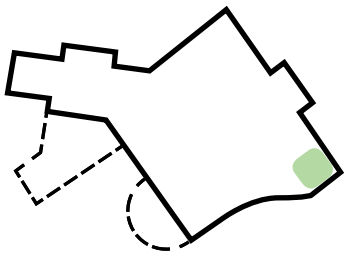


River inspired red mural

NOTE: COURTYARD DESIGN AND PRINCIPLES TO BE ADAPTED TO REVISED LOCATION AND LAYOUT

High Acuity Zone - The River

The High Acuity courtyard overlooks the atrium provides a passive space for group meetings with a gathering area, sensory planting, and auditory stimuli.



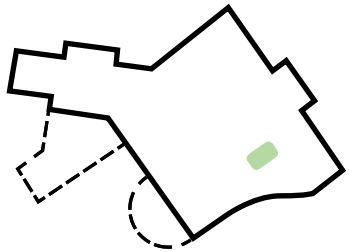
KEY PLAN

NOTE: COURTYARD DESIGN AND PRINCIPLES TO BE ADAPTED TO REVISED LOCATION AND LAYOUT

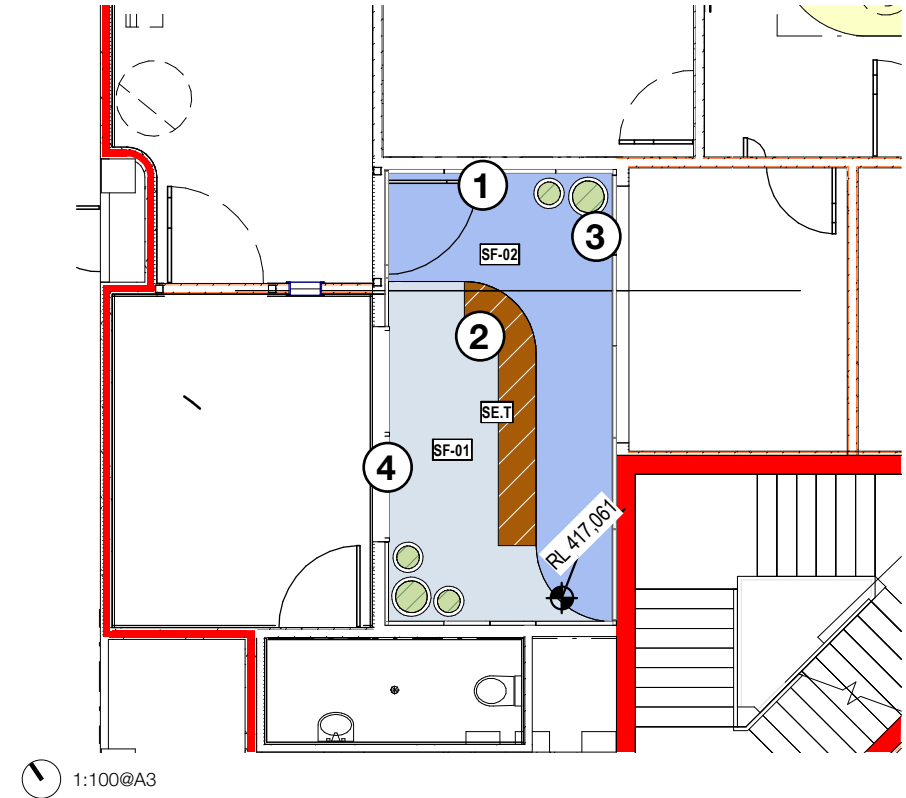
Seclusion Courtyard - The River

The Seclusion Courtyard provides a passive space for individual breakout with a central seating area and sensory planting.

- ① Mural by residents to wall
- ② Feature planting in pot bolted down to softfall paving
- ③ Timber seating
- ④ Mural by residents to wall



KEY PLAN



Planting character



Mural by residents to wall

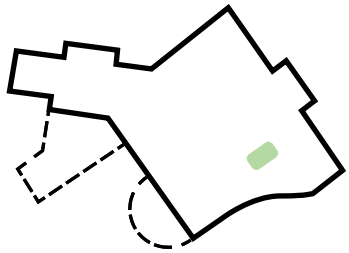


Timber seating

NOTE: COURTYARD DESIGN AND PRINCIPLES TO BE ADAPTED TO REVISED LOCATION AND LAYOUT

Seclusion Courtyard - The River

The Seclusion Courtyard provides a passive space for individual breakout with a central seating area and sensory planting.



KEY PLAN

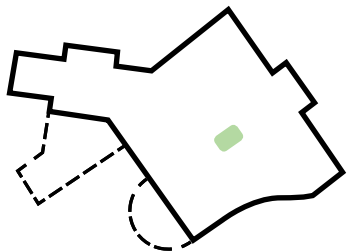


NOTE: COURTYARD DESIGN AND PRINCIPLES TO BE ADAPTED TO REVISED LOCATION AND LAYOUT

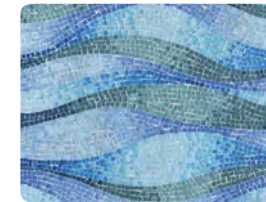
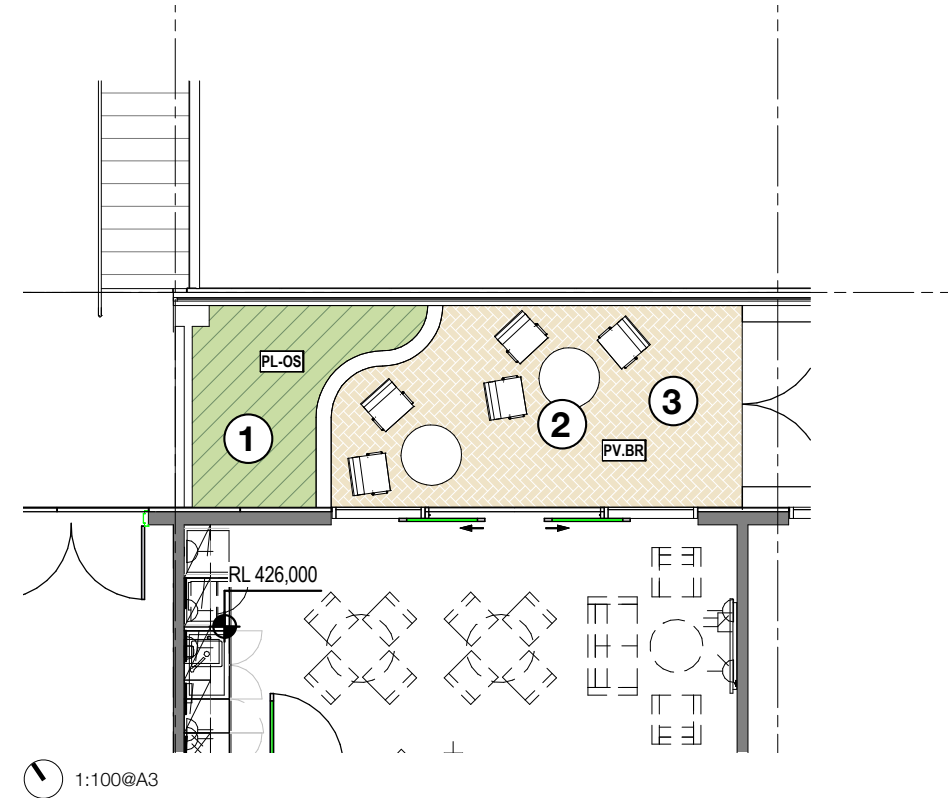
Staff Courtyard - The River

The Staff Courtyard provides staff a breakout space with seating opportunities, feature planting, and access to the broader views of Tamworth.

- 1 Raised planter wall with integrated timber seating and table
- 2 Moveable cafe-style furniture
- 3 River inspired paving



KEY PLAN



River inspired paving with inscription



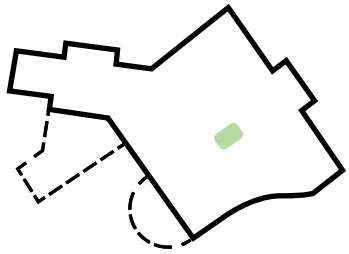
Hardy feature planting to provide visual amenity



NOTE: COURTYARD DESIGN AND PRINCIPLES TO BE ADAPTED TO REVISED LOCATION AND LAYOUT

Staff Courtyard - The River

The Staff Courtyard provides staff a breakout space with seating opportunities, feature planting, and access to the broader views of Tamworth



KEY PLAN



Planting Character

Planting Framework

A predominantly native planting approach has been taken with feature and deciduous planting in key locations. Planting queues have been taken from the Tamworth City centre, as well as the Tamworth Royal Botanic Garden and the Indigenous Botanic Garden.

The internal planting character has been considered with a focus on plant tolerance, durability, and the thematic drivers of the space. The use of indigenous planting with a focus on healing has been integrated in consultation with the local Aboriginal community. The allowance for planting by the residents and the local community further integrates the community in the development of Tamworth mental Health Unit, strengthening the ownership of the space through the integration of culturally significant species.

Irrigation

A sub surface drip irrigation system is recommended to be installed as part of the landscaping works. This low cost and automatically operated system is vital to the establishment and longevity of planting stock and will ensure the anticipated outcome is reached.



Backhousia citriodora



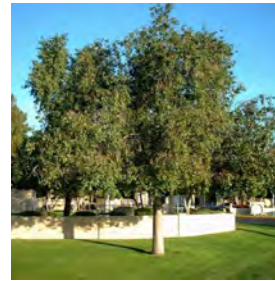
Allocasuarina torulosa



Eucalyptus melliodora



Brachychiton acerifolius



Brachychiton populneus



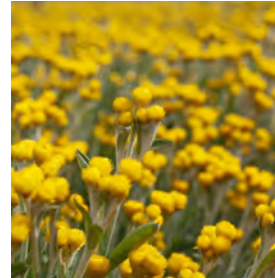
Xanthorrhoea australis



Adenanthos sericeus



Banksia 'Birthday Candles'



Chrysocephalum apiculatum



Eremophila glabra



Mentha australis



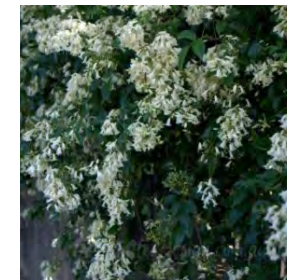
Casuarina 'Cousin It'



Dianella caerulea



Gazania tomentosa



Pandorea pandorana



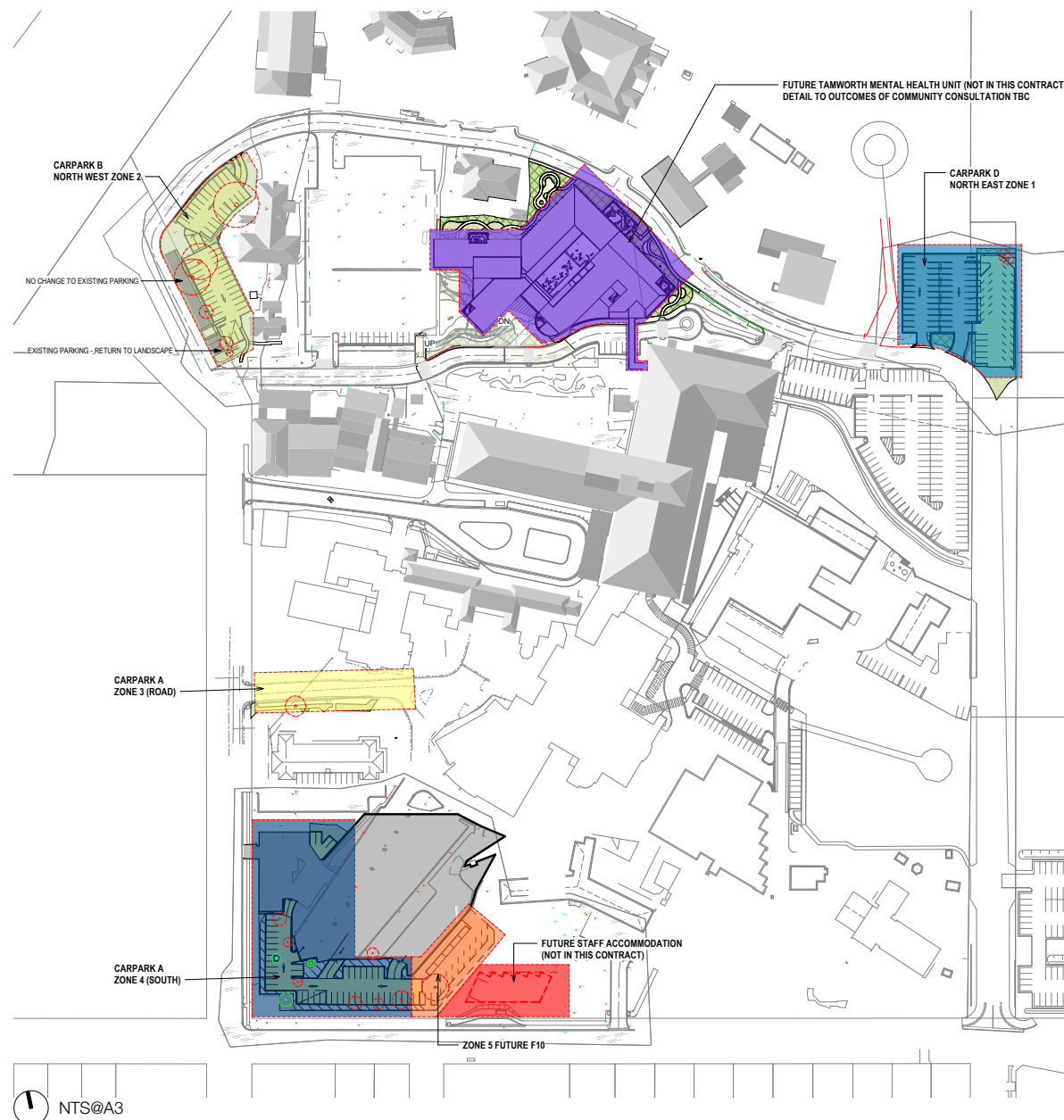
Pennisetum alopecuroides

NOTE: PLANT SPECIES TO BE FURTHER DEVELOPED
WITH CONNECTION TO COUNTRY DESIGN JAMS

Early works - Landscape Staging Plan

Legend

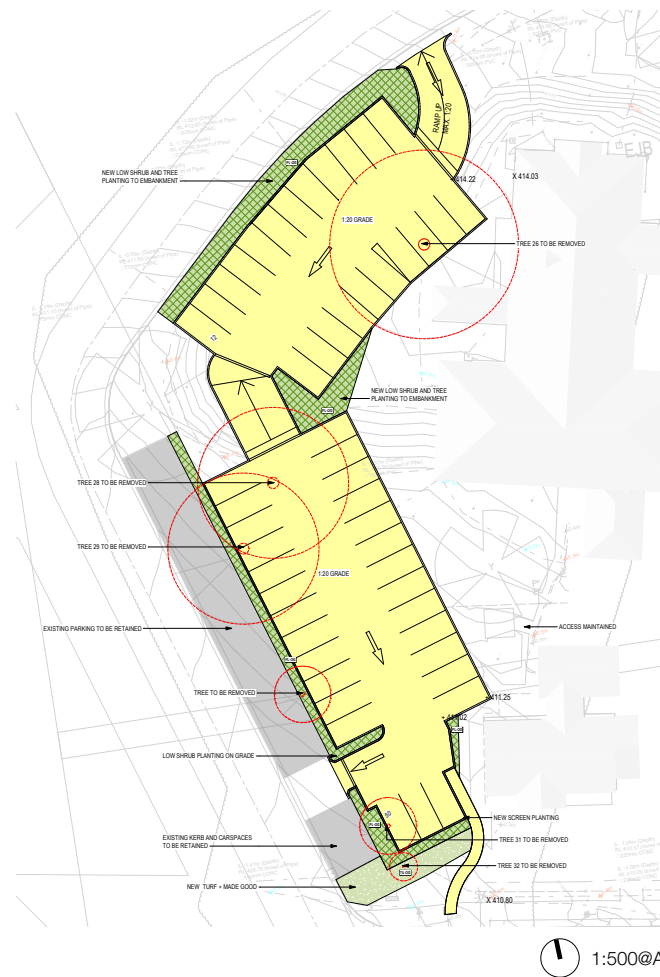
- Future works (not part of early works)
- Carpark D North East Zone 1
- Carpark B North West Zone 2
- Carpark A Zone 3 (Road)
- Carpark A Zone 4 (South)
- Zone 5 Future F10



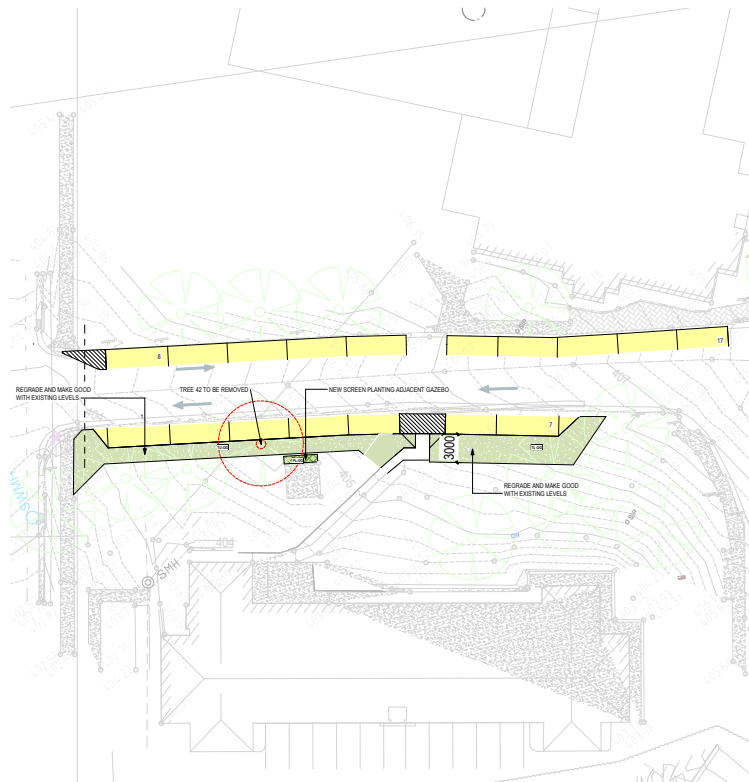
Early works - Carpark plan North East Carpark D Zone 1



Early works - Carpark plan North West Carpark B Zone 2



Early works - Carpark plan South West Carpark A Zone 3



1:500@A3

Early works - Carpark plan South West Carpark A Zone 4



1:500@A3